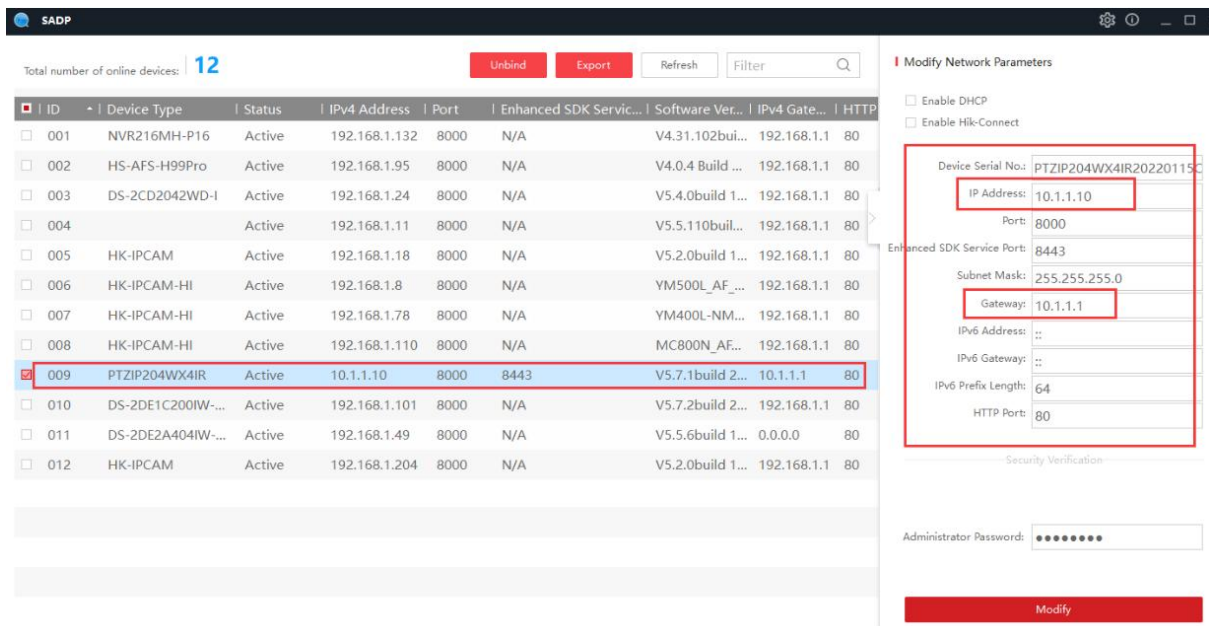


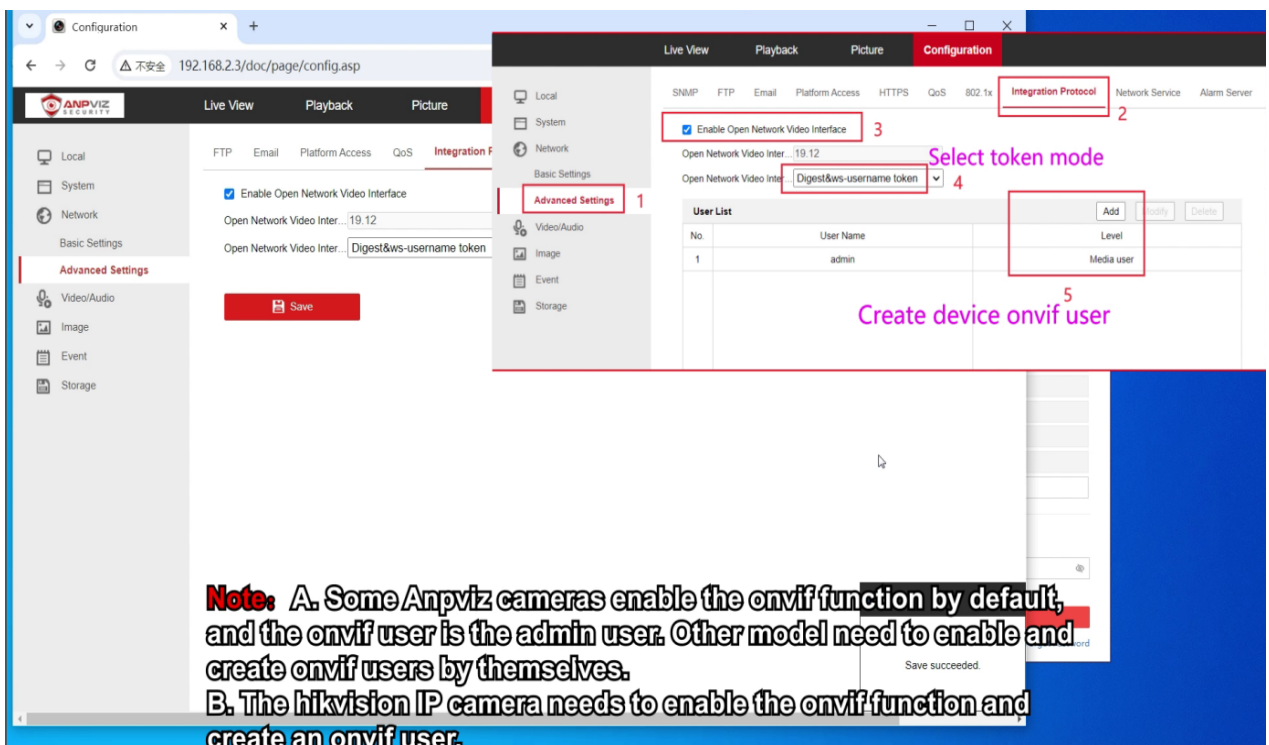
How to add ANPVIZ H Series Camera to Dahua or Amcrest NVR PoE

1. Power on the camera and connect it to the same router as the computer with a network cable (instead of connecting the camera directly to the POE port of the NVR).
2. Install the SADP tool software, then activate the camera. Through the SADP tool of the H series, change the IP address of the H series camera to the same segment as the Dahua NVR POE interface, that is, 10.1.1.XX, as follows:

SADP tool download link : www.anpviz.com--Support--Download Center



3. Check whether the camera's onvif is enabled and the authentication mode is correct, as shown in the figure



4. Connect the H series camera directly to the Dahua NVR POE interface through the network cable, wait for about 2 minutes for the camera to start normally, and then enter the Dahua NVR menu - camera settings - click the manual Add , Manually enter the IP address, user name and password of the camera settings, and then click OK. The operation is as shown below:

