

Network Video Recorder Quick Start Guide

Version: 1.0

Important Safety Instructions

- This device is designed and manufactured to assure personal safety for indoor usage. Improper use can result in electric shock or fire hazard.
- Do not use this product near any liquids.
- Do not place this product on an unstable surface.
- Do not drop or shake the product.
- Do not allow anything to rest on the power supply and power cord.
- Never connect other uncertain power supply to this product as it
- may cause dangerous voltage or short out that could result in a fire or electric shock.
- Do not put this product in a airtight space. Keep cooling system unobstructed.
- Unplug this product from the wall outlet before cleaning.
- Do not use liquid cleaners or aerosol cleaners. Use a damp cloth for cleaning.

FCC statements

This device complies with Part 15 of the FCC Rules. Operation is subject to the following two conditions: (1) this device may not cause harmful interference, and (2) this device must accept any interference received, including interference that may cause undesired operation.

LVD/EMC Directive



This product complies with the European Low Voltage Directive 2014/35/EU and EMC Directive 2014/30/EU.

WEEE Directive-2012/19/EU



The product this manual refers to is covered by the Waste Electrical & Electronic Equipment (WEEE) Directive and must be disposed of in a responsible manner.

Battery Directive-2013/56/EC

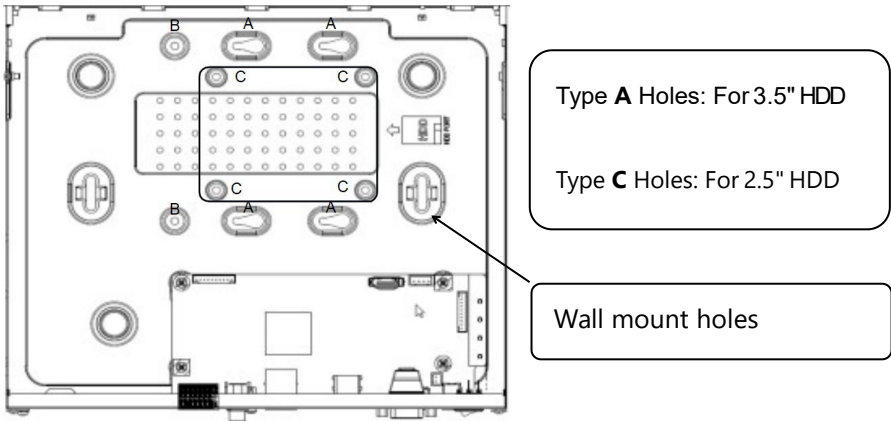


Battery in the product complies with the European Battery Directive 2013/56/EC. For proper recycling, return the battery to your supplier or to a designated collection point.

Hard Drive installation

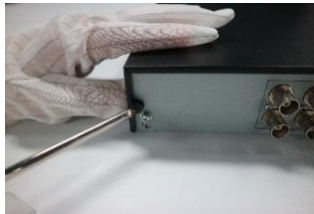
There is no Hard drive built-in the NVR product in general selling. To store your media data, you have to buy at least one 3.5 inch or 2.5 inch Hard Drive and install it by yourself.

An example for hard drive screws holes diagram:



Installing steps:

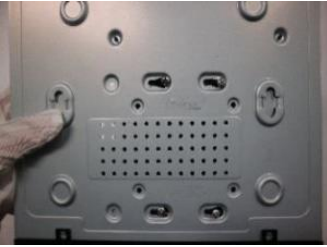
Important: plug out the power cord from the power outlet before installation.



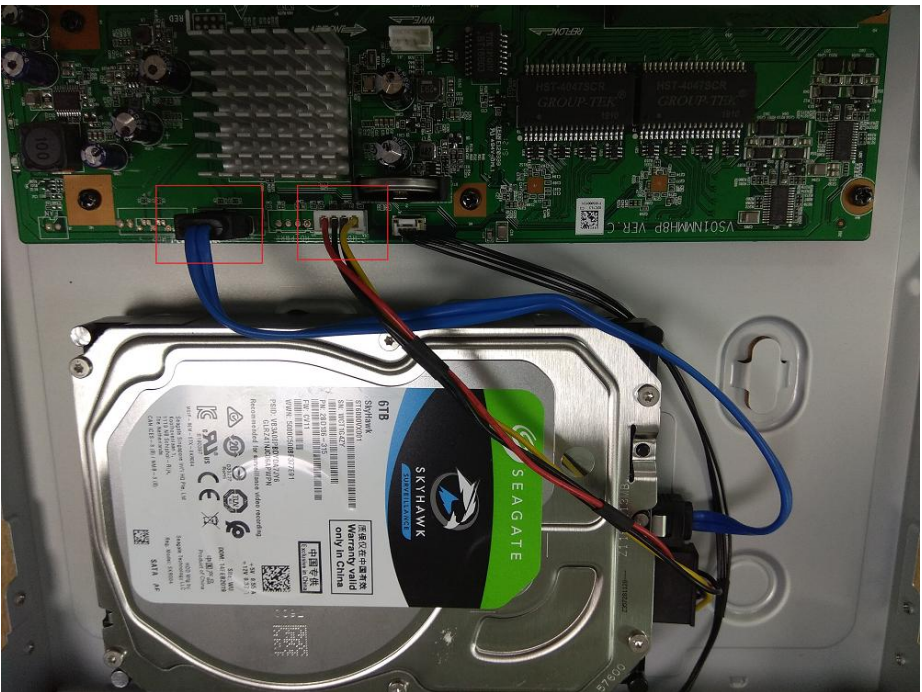
1. Loosen screws on the rear panel and both sides. Remove the cover.



2. Tighten the 4 screws a bit to hard drive screws holes, connect the data and power cables



3. Slide the hard drive into the screw slots. Tighten all screws.

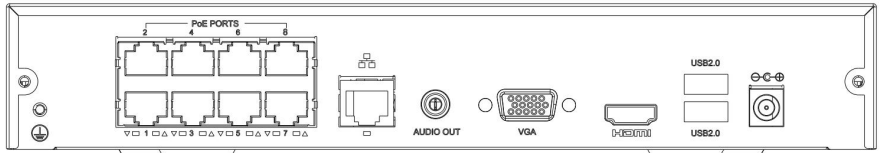


4. Connect the HDD data and power plug to recorder main-board.

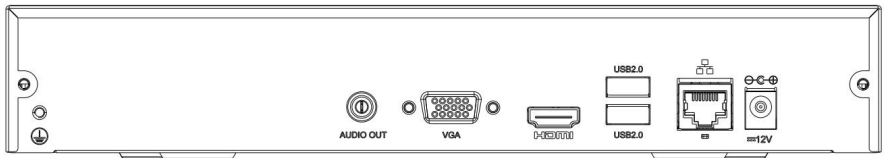
5. Put the cover back and tighten all the cover screws.

Product panel View

- Rear Panel built-in PoE switch



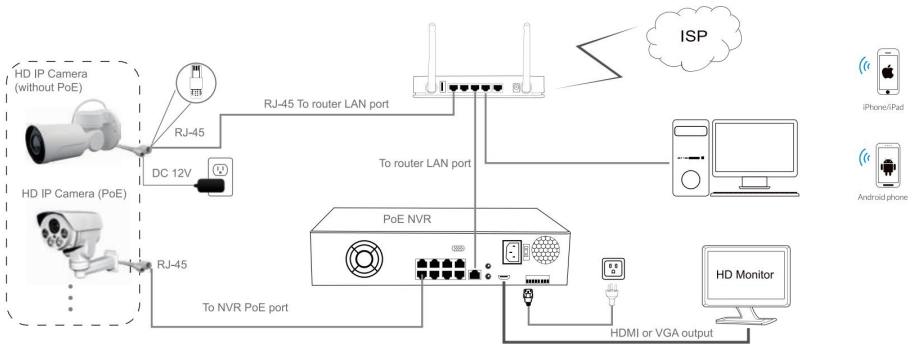
- Rear Panel without PoE switch



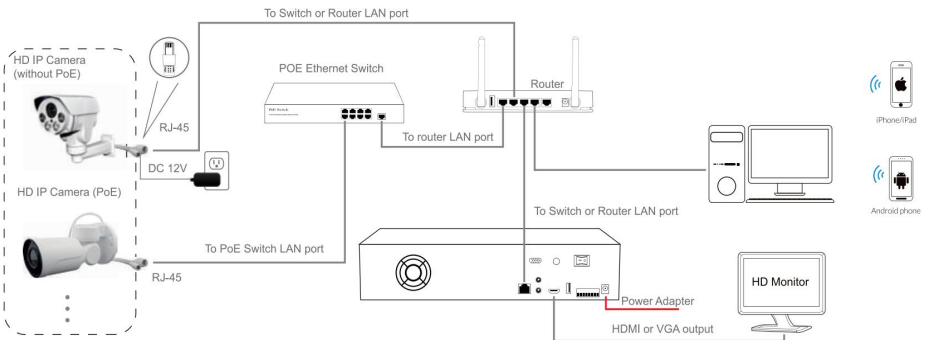
Notice: The rear of product panel may change without notice, please check this only for reference.

System Connection Diagram

■ Product built-in PoE switch



■ Product without PoE switch



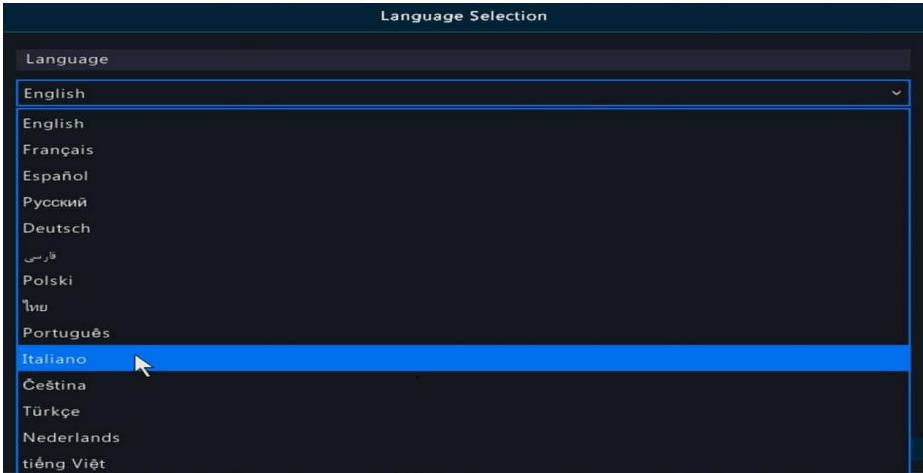
Important:

- The NVR built-in PoE switch ports can work only for PoE camera, do not connect to other device. Otherwise, it may cause dangerous to your device.
- It's recommended to use Cat5e or above standard 4 pairs UTP for PoE network communication.

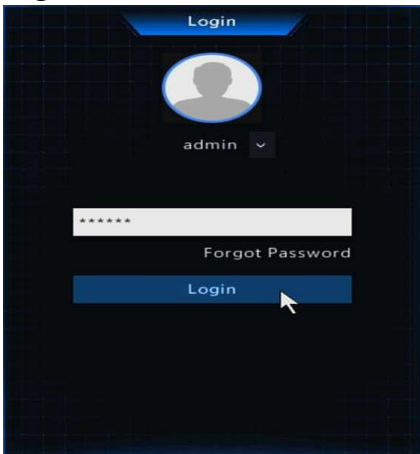
Power on and setup NVR following Wizard

After switching on, the recorder system **Startup Wizard** will pop up to guide you setup your system quickly.

Select your familiar language



Login with default admin account



Default Password

Username: admin

Password: 123456

Change a strong password for admin

Change Password

Username: admin

Old Password: *****

Password: *****| **Strong**

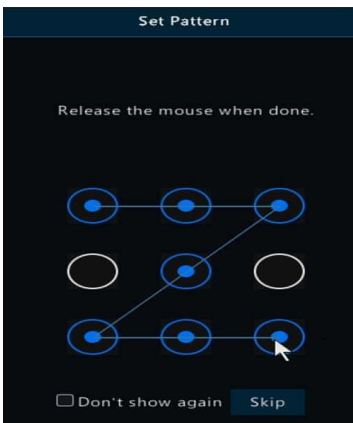
Confirm: *****

A strong password is recommended: at least 8 characters including uppercase and lowercase letters, digits and special characters (except / \ : * ? ' " < > | %).

OK Cancel

It's highly recommended to setup a strong password at least 8 characters that contain 3 kinds of characters above included in letters, digits, and special characters. (except / \ : * ? ' " < > | %)

Set a pattern for unlocking the device more friendly



You can **Skip** if pattern is not needed for some insecurity reason.

Time and time zone setup

Wizard

1 Wizard 2 Time 3 TCP/IP

Time Zone: (UTC-08:00) Pacific Standard

Date Format: YYYY-MM-DD

Time Format: 24-hour

System Time: 2019-08-22 22:42:17

Previous Next Exit

Network configuration

Wizard

1 Wizard 2 Time 3 TCP/IP

Select NIC: NIC1

Enable DHCP

IP Address: 192.168.1.30

IP Subnet Mask: 255.255.255.0

IP Default Gateway: 192.168.1.1

PoE NIC IP Addr.: 172.16.0.1

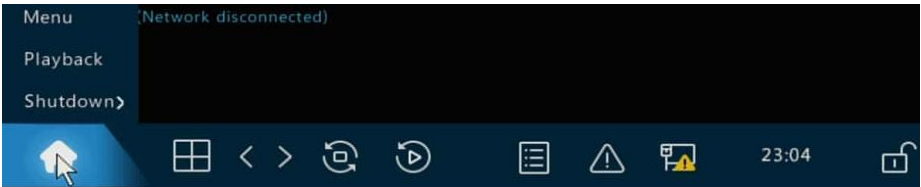
Previous OK

DHCP mode is enabled for obtaining IP address configurations automatically once there is a router or DHCP server connected in the LAN network.

If there is no DHCP server in LAN, the NVR will set itself to 192.168.1.30 for temporary service IP address. You can set your PC IP address to 192.168.1.? to

access the device in local area.

Start-up task bar

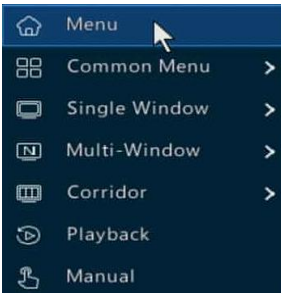


Menu: go to settings menu.

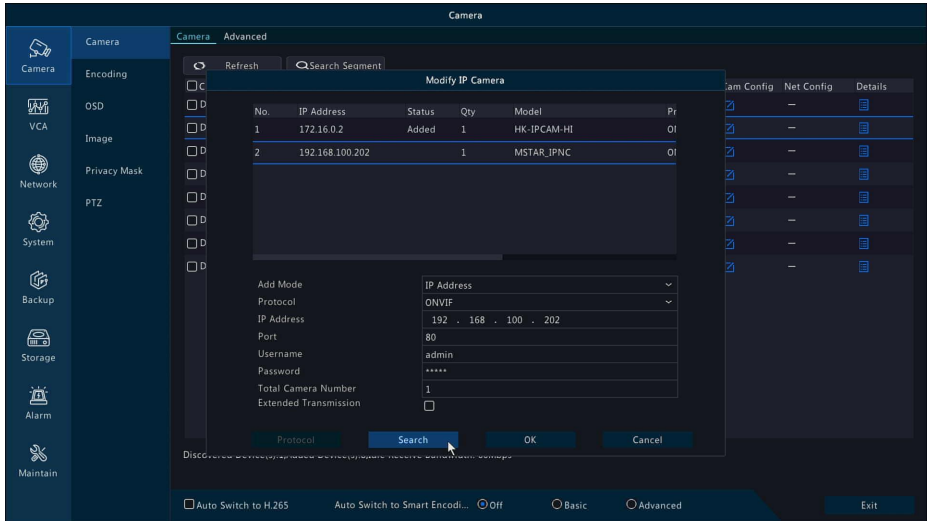
Playback: search video and playback video files.

Shutdown: shutdown or reboot this system

Right-click menu



Adding IP camera



| | |
|---------------|--|
| Plug-and-Play | Add Mode: Only PoE NVR can support Plug-and-Play No PoE NVR please select IP address to add manually |
| IP Address | |
| Plug-and-Play | |
| MyDDNS | |
| Domain Name | |

Adding PoE Camera to NVR by connecting NVR PoE Port

1. Make sure your camera can support PoE function.
2. Connect the PoE camera to NVR PoE port via Cat5e (4 pairs UTP) cable.
3. Camera will show video in 1-2 minutes automatically.(**Plug-and-Play**)

Adding camera to No PoE NVR

1. Make sure your camera can support PoE function or not.
2. PoE camera: Connect the PoE camera to your own network switch PoE port via Cat5e (4 pairs UTP) cable.
3. No PoE camera: Connect the camera to your own network switch port via Cat5e cable. Then connect the camera **power supply** to camera power jack.

4. Connect NVR LAN Port to the same network switch with cameras.
5. Go to NVR **camera config** search and add camera manually.

Important:

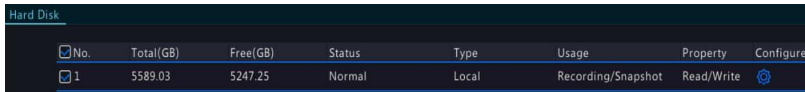
- If the NVR can not recognize your camera, please check the camera IP address configuration via camera search tool and make sure them assigned the same IP schema. (e.g. NVR:192.168.1.130, IP camera: 192.168.1.131)
 - If camera listed on NVR but no video , please double-check the password when adding.
 - This NVR PoE Ports built-in DHCP server, so try enable camera DHCP when testing the plug-and-play compatibility with your PoE camera.
 - Static IP address is recommended both on NVR and cameras for more stable working in daily use .
-

Setup Motion Recording

Then NVR will start 7*24hrs continuous once camera added. This is the most security way to store your video/audio in daily use, but it will cost more hard drive storage and cut down your storage duration.

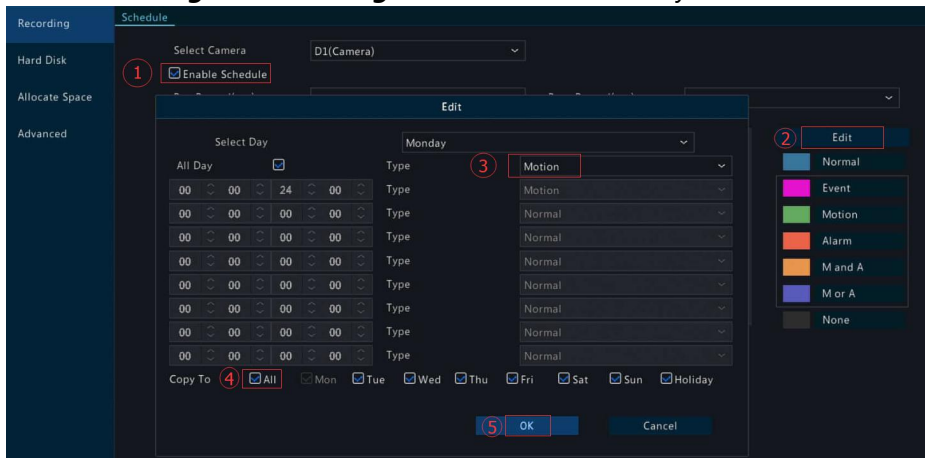
Follow the steps blow to enable motion recording:

1. Go to **Main Menu > Storage > Hard Disk**, Check the HDD status ,make sure it's **Normal** and **Read/Write**.



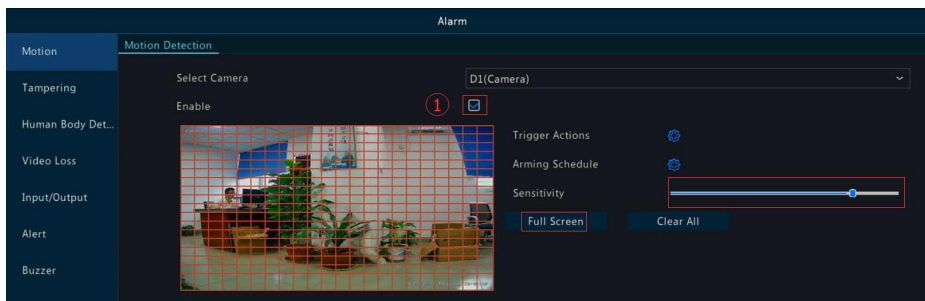
| No. | Total(GB) | Free(GB) | Status | Type | Usage | Property | Configure |
|-----|-----------|----------|--------|-------|--------------------|------------|-----------|
| 1 | 5589.03 | 5247.25 | Normal | Local | Recording/Snapshot | Read/Write | |

2. Go to **Storage > Recording, Edit** the Schedule to cyan **Motion**.




The screenshot shows the 'Recording' menu with 'Schedule' selected. The 'Enable Schedule' checkbox is checked (1). The 'Edit' dialog is open for 'Monday', with the 'Type' dropdown set to 'Motion' (3). The 'Copy To' section has 'All' checked (4). The 'Edit' button is highlighted (2), and the 'OK' button is also visible (5).

3. Enable Motion detection on each channel.



The screenshot shows the 'Alarm' menu with 'Motion Detection' selected. The 'Enable' checkbox is checked (1). A live video feed of a desk with a plant is shown. The 'Sensitivity' slider is visible, and the 'Full Screen' button is highlighted.

4. Test the motion event working or not.

Move at front of the camera, the icon  will display at the top-right corner on each channel. If nothing shows, you should access camera web and enable motion detection manually.

Important:

Some third-party camera can not support motion detection function via NVR menu directly, you should access camera web to enable Motion Detection.

Playback the recorded video

1. Go to **Start > Playback** or **right-click** menu **Playback** to get into the playback interface.
2. Select the desired date and camera then click time line to start playback.



In this interface, cut video, copy to USB, playback USB files, snapshot functions are available.

Remote access via mobile phone

This NVR supports Android and iPhone app remote access. Follow the steps below to get it works:

1. Search **Guard Viewer** in Google Play or Apple Store, or scan the QR code to download and install the app.

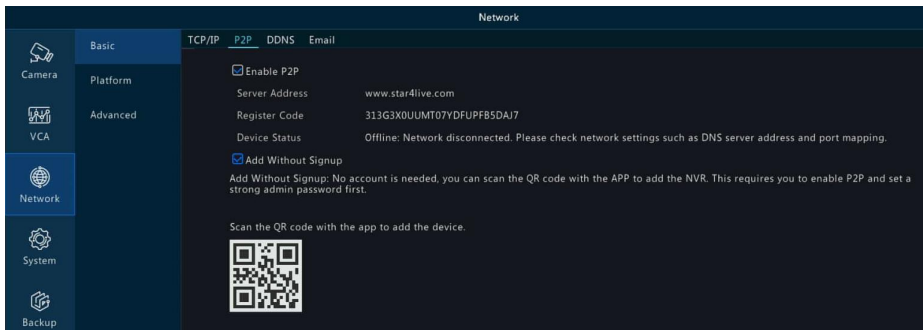


Android

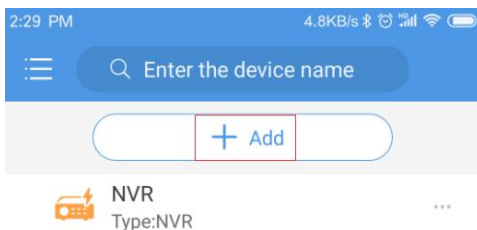


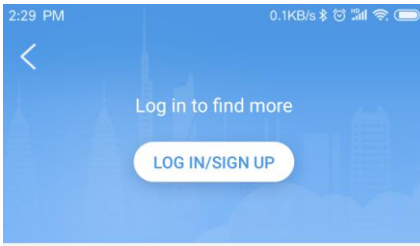
iPhone


2. Go to Main **Menu** > **Network** > **Basic** > **P2P**, make sure the **Enable P2P** is checked, **Add Without Singup** is checked and the **Device Status** is **Online**.



3. Tap the **Guard Viewer**, and tap **+Add** scan the QR code in above step.





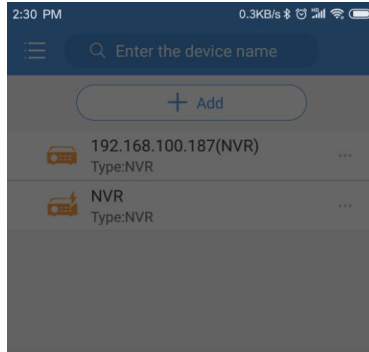
 Add Without Signup

Scan to add device (except VMS) without signup. Make sure the device has enabled this function and has a strong password.

 Manual Add

 Auto Search in LAN


 Add Wi-Fi Device



192.168.100.187(NVR)

 Start Live View

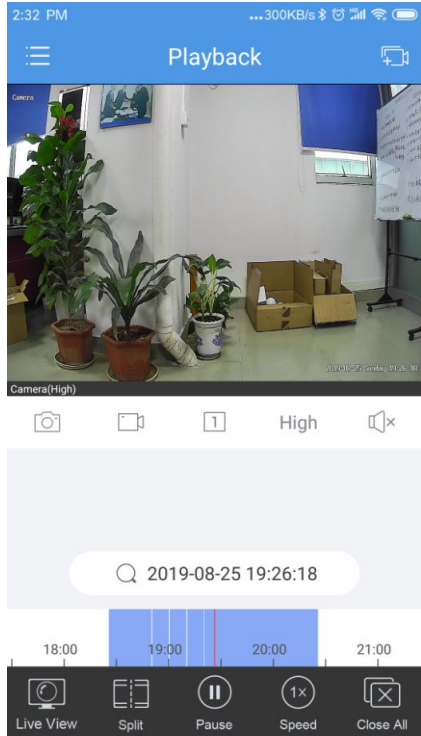
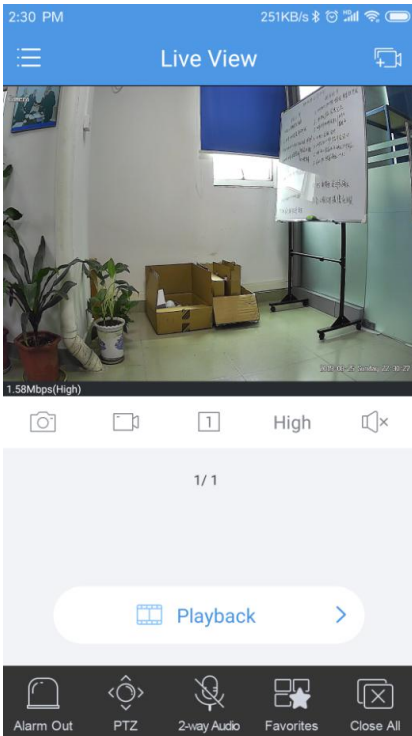
 Edit

 Bind Cloud Account

 Alarm Output

 Delete

4. **Live view** and **playback** on mobile phone via app

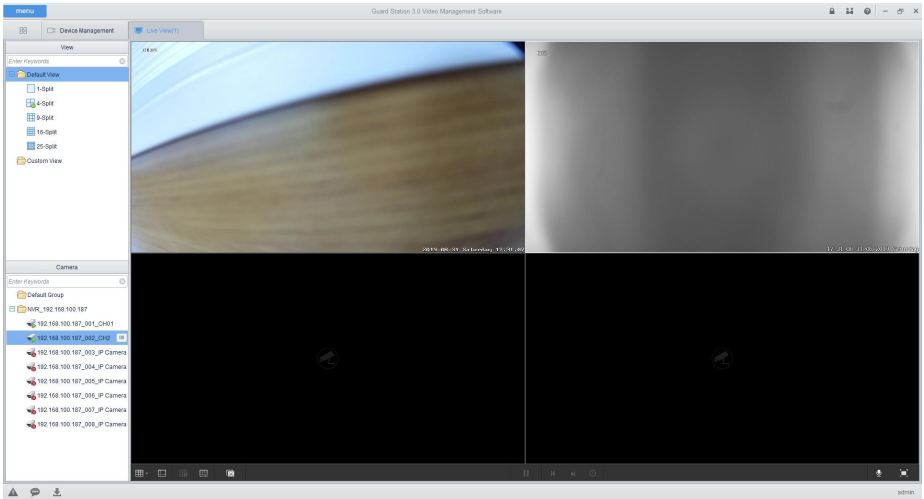
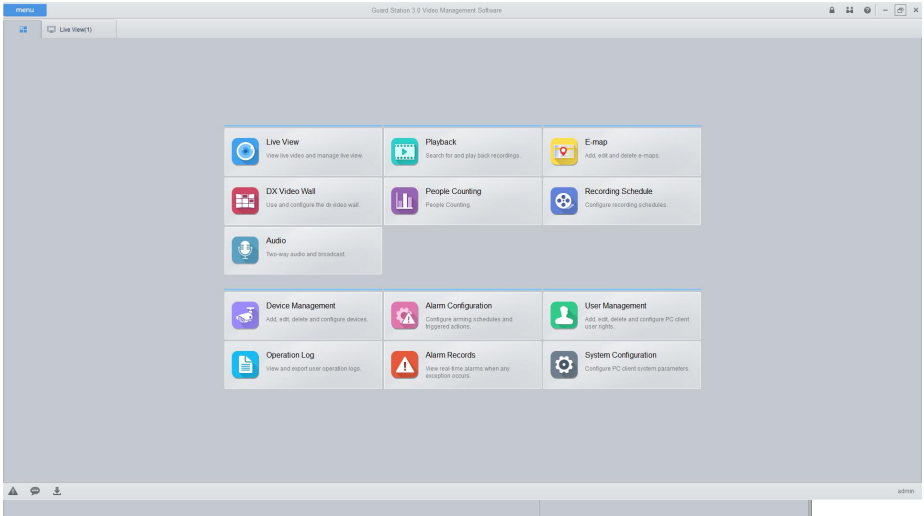


Important:

- Please setup a strong password for NVR when you want Add Without Signup. Everyone can scan the device QR code to add this device to app.
 - It's high recommended to register and sign in to add the NVR to app for highest security use.
 - Once the NVR added to the app account , the first account will become the owner and others can not add it again except you share it manually.
-

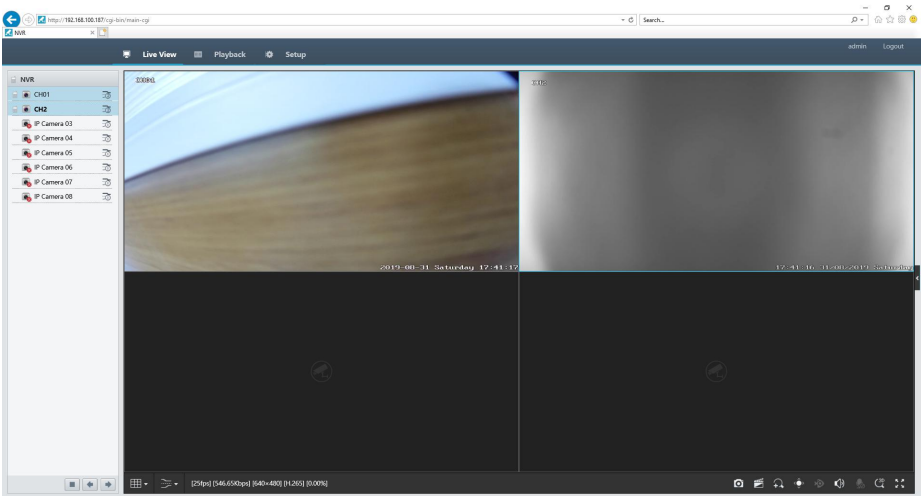
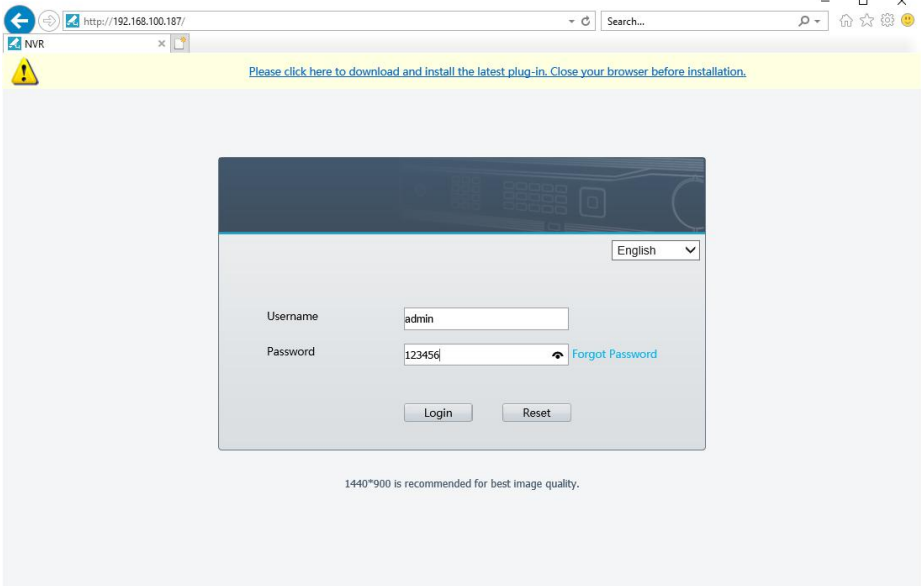
Remote access NVR via PC client software

1. For Windows PC please download the software **GuardStation_for_windows.exe** and install it as administrator.
2. For Apple mac please download the software **GuardStation_for_mac.pkg**.

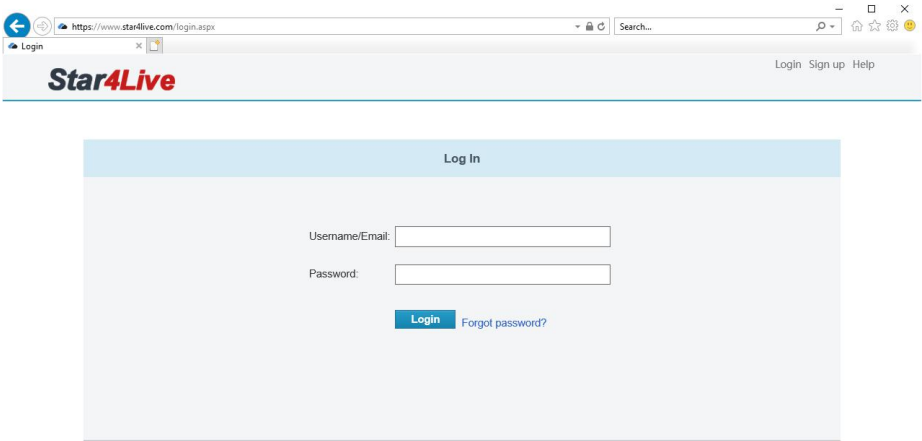


Remote view NVR via Internet Explorer

For local IP address access ,enter the NVR IP address to get into the NVR Web service page, a web player plug-in may alert at the first time login.



For Internet remote cloud access , please go to <https://www.star4live.com>



Sign up or login to your account to view your device via cloud management service interface.

Admin Password Reset

Click **Forgot Password** on the **Login** page, take a picture of the serial number dialog box and then send to your dealer for a Security Code to reset your password.

